

PUBLISHER'S INSTRUCTION

1. Periodicals which are published:

Agricultural Engineering has been published under the auspices of the Polish Society of Agricultural Engineering. The journal has been published in English since 2014. The journal publishes materials presented at the national and the international conferences and scientific trainings, dissertations and scientific monographs. The editor's office is located in the Faculty of Production and Power Engineering of the University of Agriculture in Krakow, ul. Balicka 116B, 30-149 Kraków. Editor-in-Chief: prof. dr hab. Maciej Kuboń; Deputy/Managing Editor: prof. dr hab. Sławomir Kocira, e-mail: journal@ptir.org.

2. Types of publications

- 2.1. **Review articles, up to 10 pages** of A4 typescript presenting a state and a direction of development of science in the field of the selected topic.
- 2.2. **Scientific articles, up to 8 pages** of A4 typescript, including original results of the finalised theoretical or experimental research, the content of which may influence the increase of the scientific knowledge concerning agricultural engineering.
- 2.3. **Scientific messages, up to 3 pages** of A4 typescript, presenting separated fragments of the research that are being carried out, and also original research stands, methods of measures or methods of elaboration of the measures results.

3. General and formal requirements concerning the preparation of the studies

Materials, which are submitted to the Editor through the web page <http://agriceng.ptir.org> should be **complete** (with an abstract, key words, tables, indexes, figures and bibliography); **unambiguous** with clearly determined hierarchy of titles (main title, titles of sections, subtitles, correctly numbered pages, precisely indicated illustrations, precise formulas, special signs, etc.) and **final** (author's modifications are possible only in justified cases) except for modifications introduced upon the request of reviewers, subject Editors or the Editor's office. The articles should be sent in Polish or English.

PAPER TITLE – USE CAPITAL LETTERS, CENTER, BOLD, TIMES NEW ROMAN, SIZE 12, DO NOT USE ABBREVIATIONS HERE

Family Name First Name^a, Family Name First Name^{b*} - Times New Roman, Size 12

^a Name of the Department/Institute, University/Company, Contry, e-mail ORCID XXXX-XXXX-XXXX-XXXX - Times New Roman, Size 10

^b Name of the Department/Institute, University/Company, Contry, e-mail ORCID XXXX-XXXX-XXXX-XXXX - Times New Roman, Size 10

*Corresponding author: email: jan.kowalski@urk.edu.krakow.pl

Abstract: Brief description of the study and used methods – min 1000 char. /Times New Roman, Size 10/

Key words: keyword1, keyword2, keyword3...- max 5 keywords /Times New Roman, Size 10/

Introduction – Times New Roman, bold, 12

The article should consist of sections: Introduction, Material and Methods, Results and Discussion, Conclusions, Bibliography.

Please note that the full paper should not exceed 8 pages including text, figures and tables.

- Language: Papers should be written in English or Polish Language.
- Font: Times New Roman, Size 12, Colour Black
- Page Setup: It is strongly recommended to observe this given paper format. We kindly advise you to input your paper text in this document which is already properly formatted.
- Size: A4 paper, Portrait
- Margins: Left/Right 2,5 cm, Top/Bottom 2,5 cm.
- Alignment: Justify, Line Spacing Single.

Use of standard abbreviations is acceptable. Place special or unusual abbreviations in parentheses after the full term for the first time it appears. Linguistic accuracy is the responsibility of the authors.

- Units: given in round brackets

Tables: number each table and put table headings above the table – Align Left.

Figures and images: number each figure, put figure caption under the figure,

Formula: Formula should be typewritten (use, e.g., Microsoft Equation Editor).

Tables: Font: Times New Roman, Size 9, Colour Black

Table 1. (Times New Roman, Size 10)

Organization of agricultural production (Times New Roman, Size 10)

Specification	Production branch						
	vegetable	fruit	plant	dairy	livestock	mixed	average
Arable land (ha)	7.00	1.91	6.50	6.43	2.97	4.84	5.48
Including:							
Cereals	2.06	0.90	3.64	1.48	1.76	2.31	2.09
Roots	0.62	0.03	0.28	0.23	0.11	0.12	0.24
Fodders	0.82	0.88	1.48	4.67	0.99	2.27	2.48
Vegetables	3.50	0.11	0.30	0.04	0.12	0.14	0.50
Herbs	–	–	0.80	–	–	–	0.17
Agricultural land (ha)	8.34	3.45	13.80	20.06	4.88	8.03	12.66
Livestock density (LSU·ha ⁻¹)	0.86	0.19	0.69	0.67	0.32	0.45	0.60

Figures: Font: Times New Roman, Size 9, Colour Black

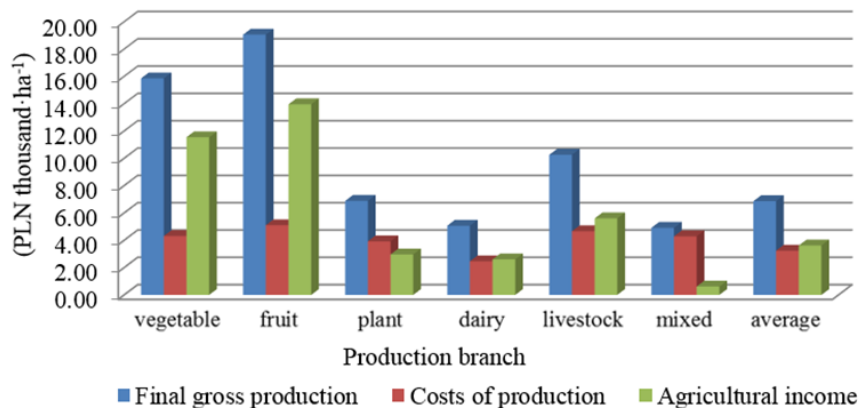


Figure 1. Gross unit final production, production costs and agricultural revenue (Times New Roman, Size 10)

Formula: Font: Times New Roman, Size 10

$$M_i = A_m + A_b + I_r + (W_b - W_p) \quad (1)$$

where:

- A_m – Depreciation of technical means
- A_b – Depreciation of buildings and facilities
- I_r – Development investments
- W_b – Gross balance income of the farmer's family
- W_p – Parity pay

References should be used in accordance with the example: Modern agricultural engineering is looking for "safe" methods of improving the quality of crops using an interdisciplinary combination of mathematics, biophysics, agronomy, molecular biology and physics (Cieśła et al., 2015). Research tasks, including mathematical modeling of agribiological processes, are carried out as part of agricultural engineering and its ongoing operations (Kowalski and Nowak, 2015, Michałek, 2008).

Material and Methods

Materials and Methods should be described with sufficient details to allow others to replicate and build on published results.

Results and Discussion

This section it should provide a cexperimental results and their inter-pretation. Authors should discuss the results and how they can be interpreted in perspective of previous studies and of the working hypotheses. The findings and their implications should be discussed in the broadest context possible.

Conclusions – min 1000/1500 char

Summarize the results of the research/paper and write the conclusion with a few sentences here; **Articles without conclusions will NOT be published.**

Acknowledgements

This section is optional.

References /Styl APA/

- Alvarado, V., Bradford, K.J. (2002). A hydrothermal time model explains the cardinal temperatures for seed germination. *Plant, Cell & Environment* 25, 1061-1069.
- Białobrzeski, I., Markowski, M., Bowszys, J., Myhan, R. (2005). Symulacyjny model zmian pola temperatury w silosie zbożowym. *Inżynieria Rolnicza*, 8(68), 23-30.
- Gładyszewska B. (1998). *Ocena wpływu przedsiwnej laserowej biostymulacji nasion pomidorów na proces ich kiełkowania*. Rozprawa doktorska. Lublin. Maszynopis.
- Shafii, B., Price, W.J., Swensen, J.B., Murray, G.A. (1991). "Nonlinear Estimation of Growth Curve Models for Germination Data Analysis", in Proceedings of the 1991 Kansas State University Conference on Applied Statistics in Agriculture, G. A. Milliken, J. R. Schwenke (eds.), Manhattan, KS: Kansas State University, 19-42.
- Zeide, B. (1993). Analysis of growth equations. *Forest Science*, 39, 594-616.

Remark:

Papers without REFERENCES will not be accepted!

Every text citation must be listed under the heading REFERENCES at the end of the text. In the text, every reference should be quoted at least once with indices in the form: (Kowalski, 2019); (Nowak and Kowalski, 2018), ..., etc. (but include all names in the reference list in case there are more than one author per quoted material).

TYTUŁ ARTYKUŁU W JĘZYKU POLSKIM

Streszczenie. Times New Roman, 10

Słowa kluczowe: Times New Roman, 10